

**Arkansas Trucking Association  
Maintenance Council**

**Little Rock AR**

**3-15-12**

**Presented by  
SAFHolland  
Muskegon MI**

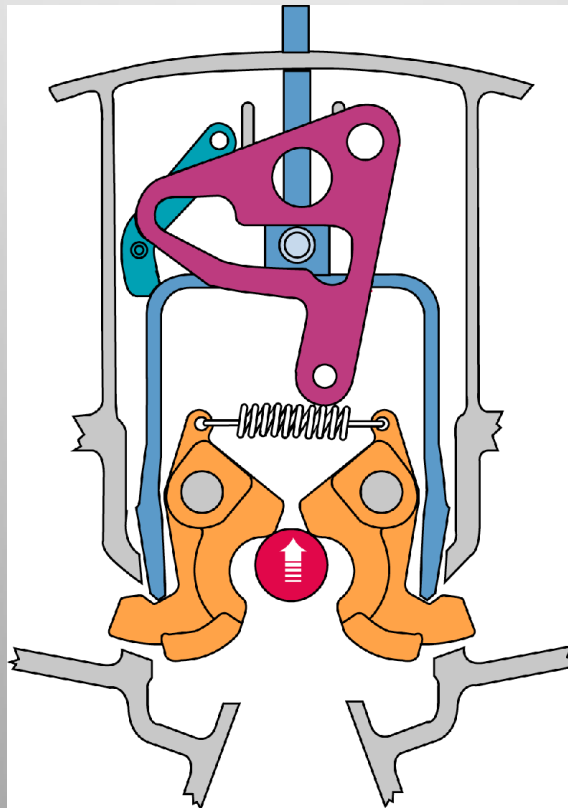
# **Fifth Wheel Maintenance and Operation**

**Presented by**

**Rob Nissen**  
**National Service Manager**

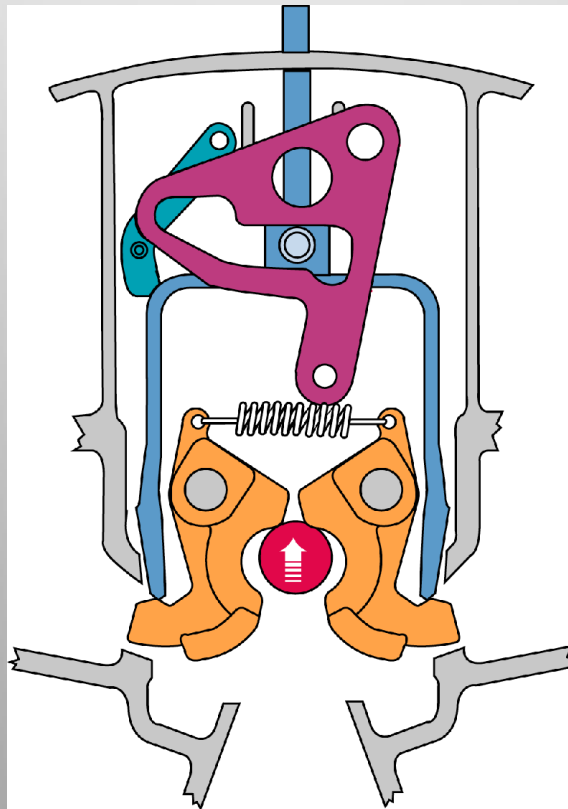
# **Coupling and Uncoupling “B” Style Lock Fifth Wheels**

## “B” Style Lock



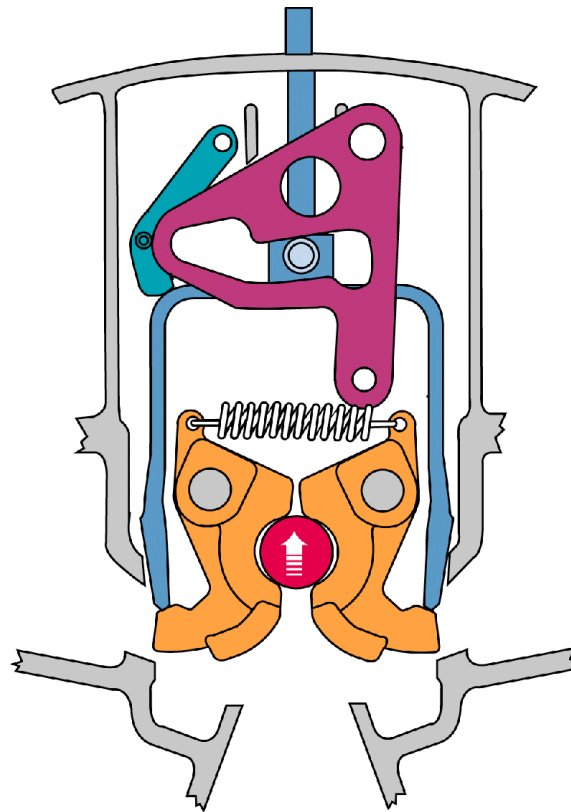
COUPLING OPERATION 1

## “B” Style Lock



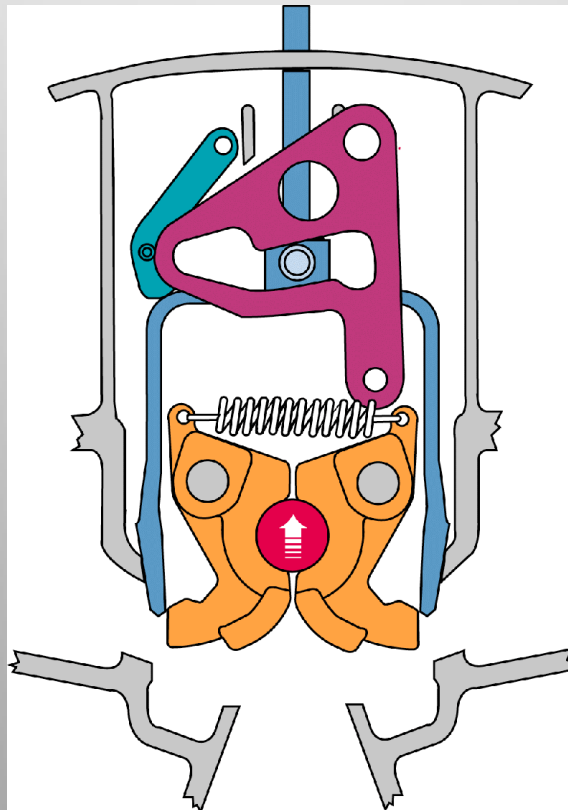
**COUPLING OPERATION 2**

## “B” Style Lock



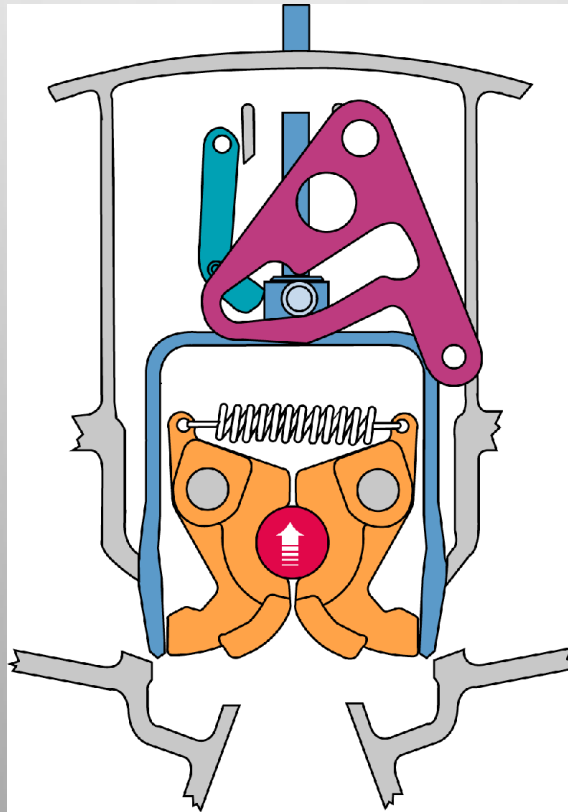
**COUPLING OPERATION 3**

## “B” Style Lock



COUPLING OPERATION 4

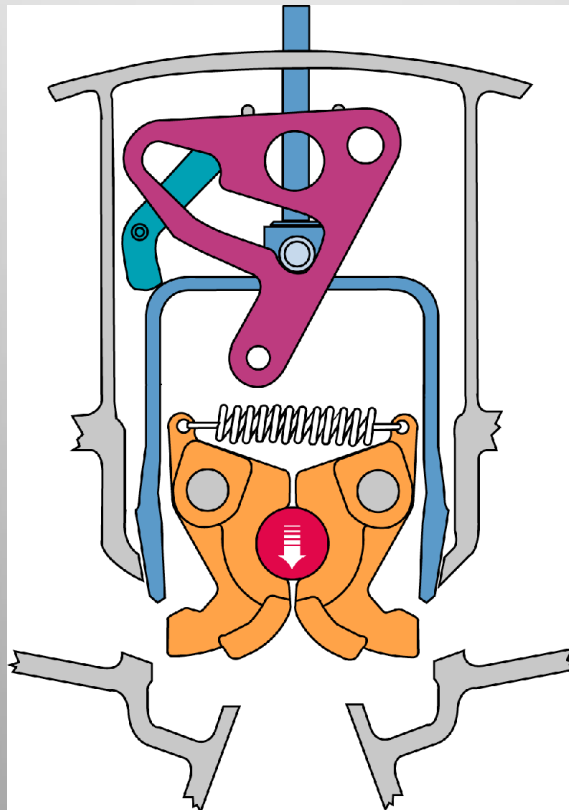
## “B” Style Lock



COUPLING OPERATION 5

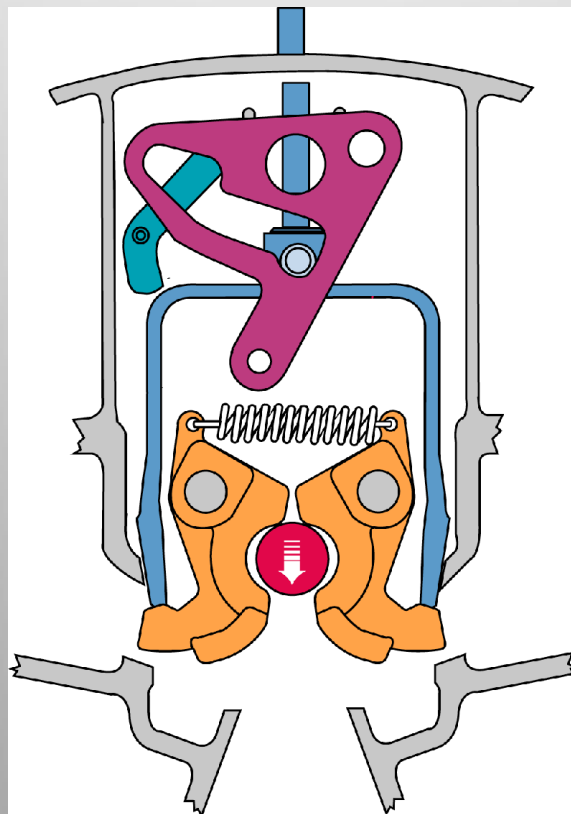


## “B” Style Lock



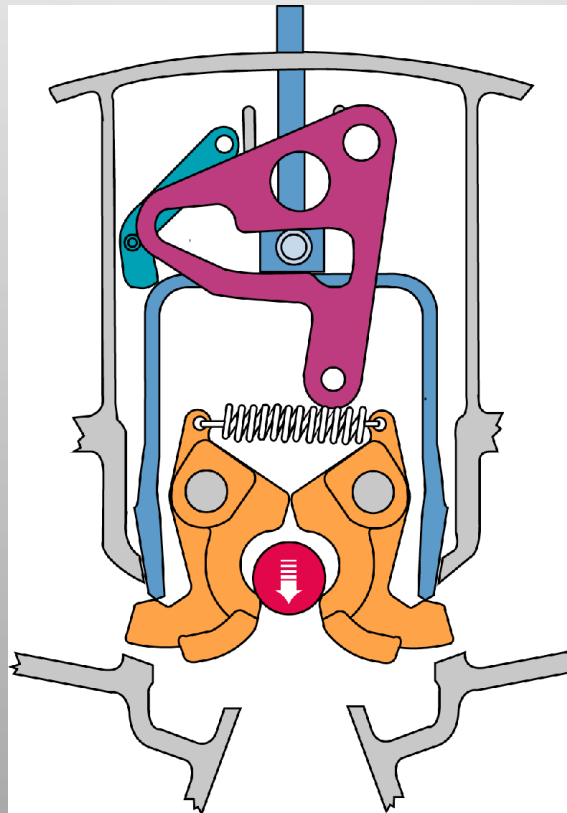
UNCOUPLING OPERATION 1

## “B” Style Lock



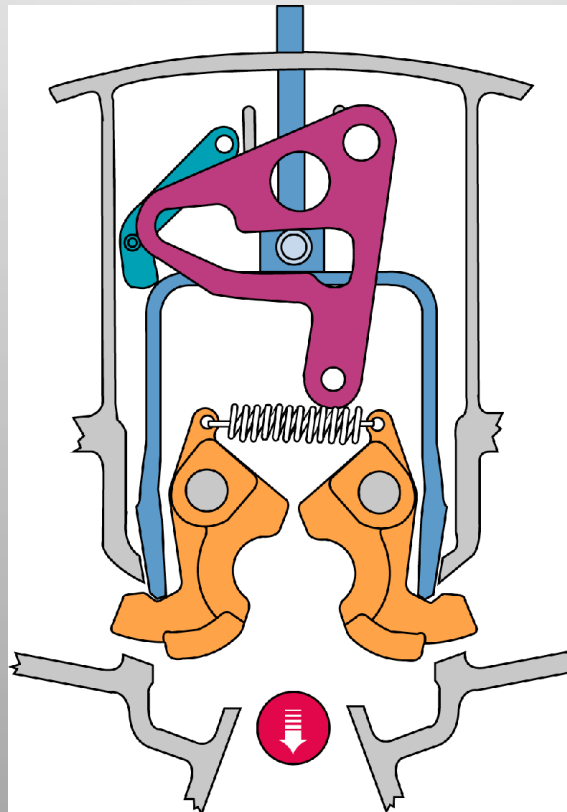
UNCOUPLING OPERATION 2

## “B” Style Lock



UNCOUPLING OPERATION 3

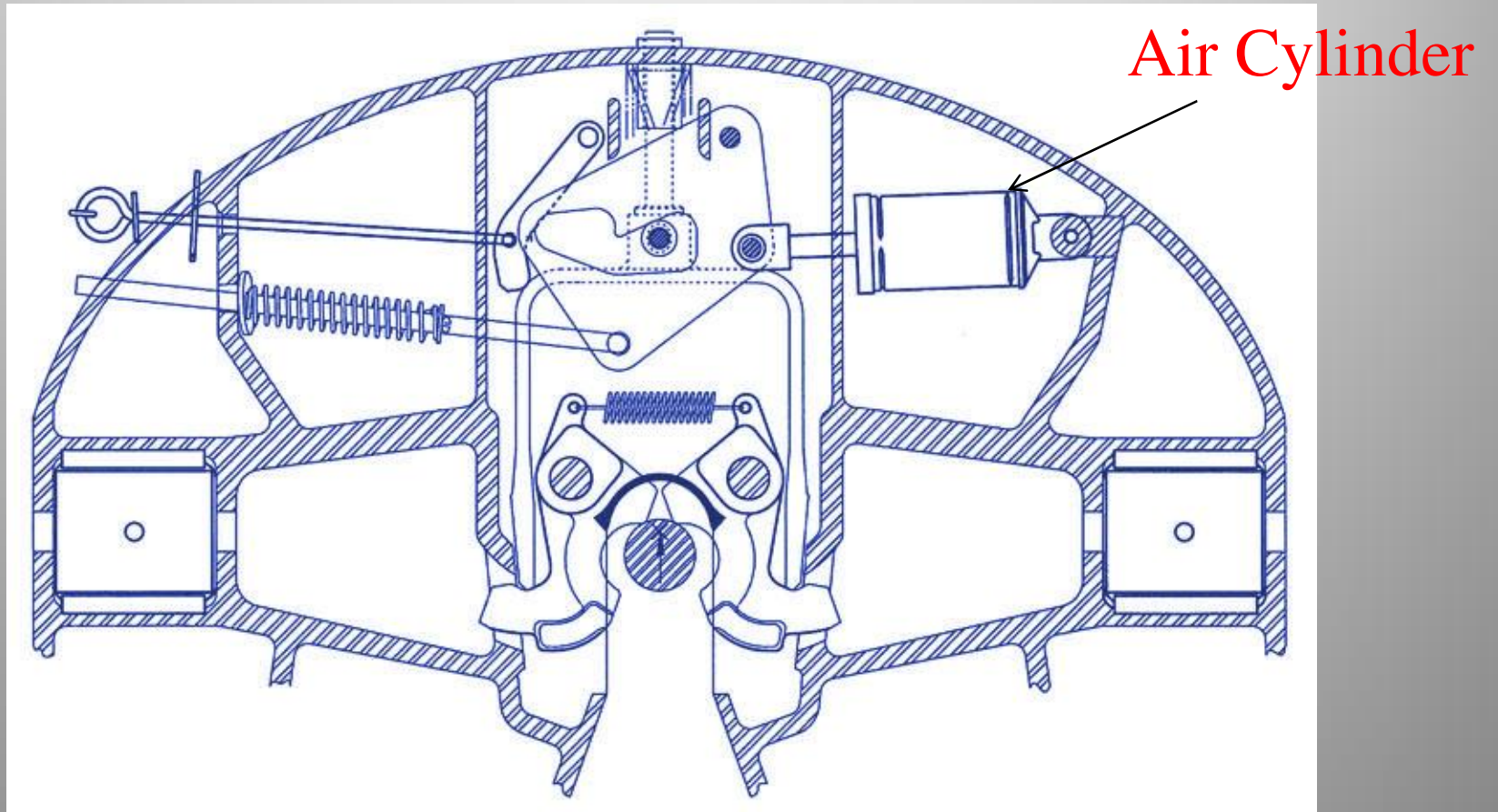
## “B” Style Lock



UNCOUPLING OPERATION 4

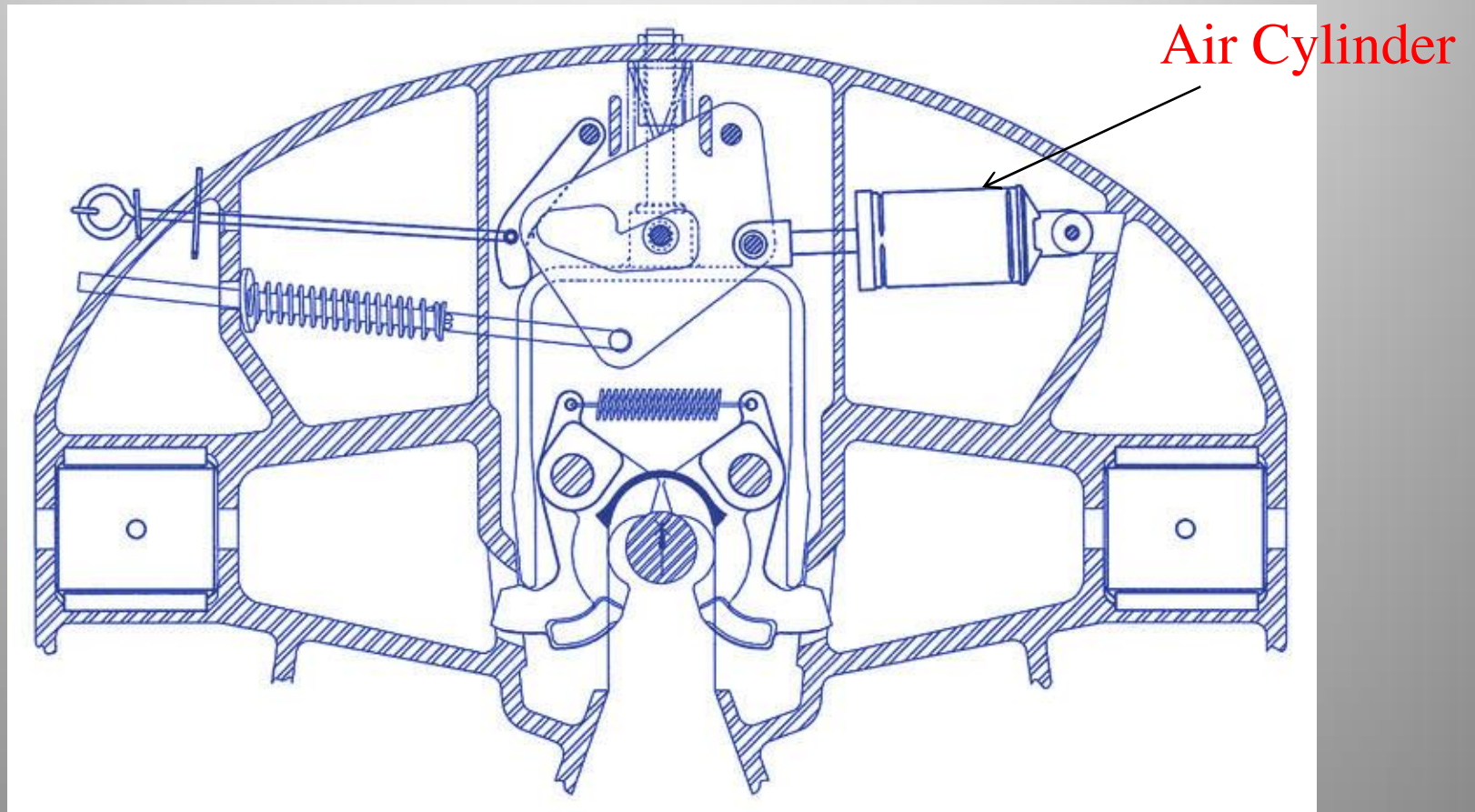
# **“B” Style Lock With Air Release**

## “B” Style Lock With Air Release



COUPLING SEQUENCE 1

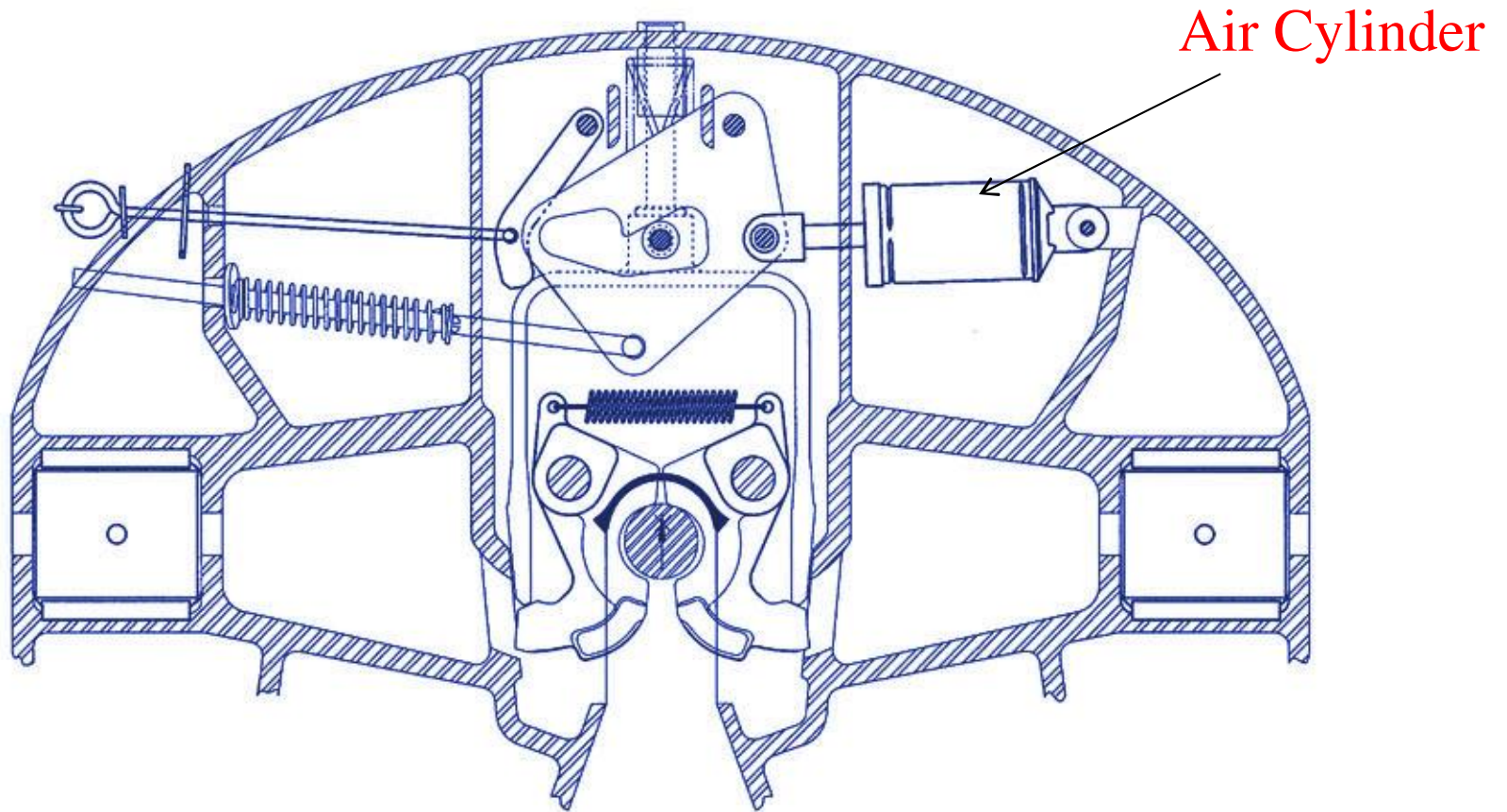
## “B” Style Lock With Air Release



COUPLING SEQUENCE 2



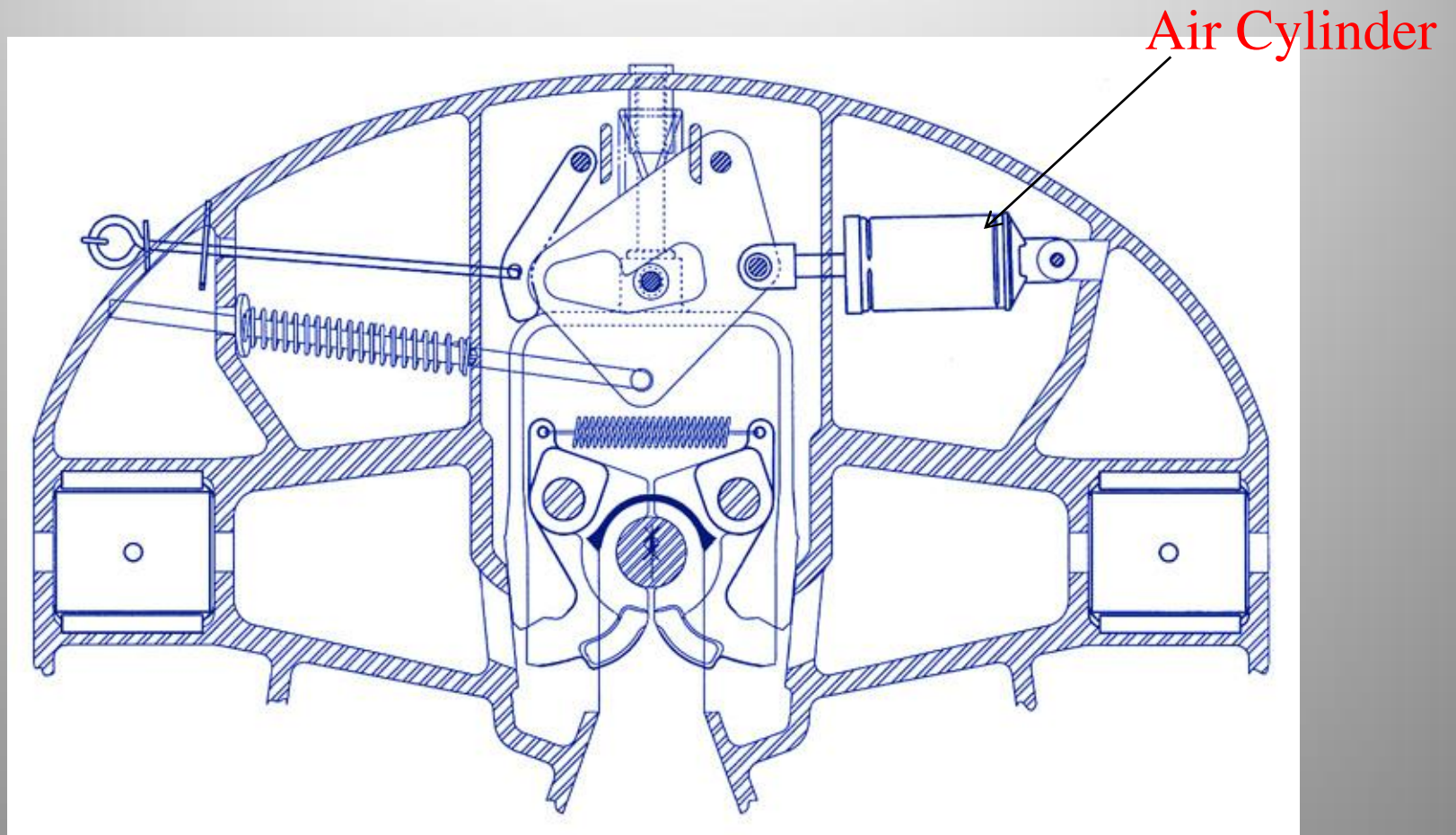
## “B” Style Lock With Air Release



**COUPLING SEQUENCE 3**

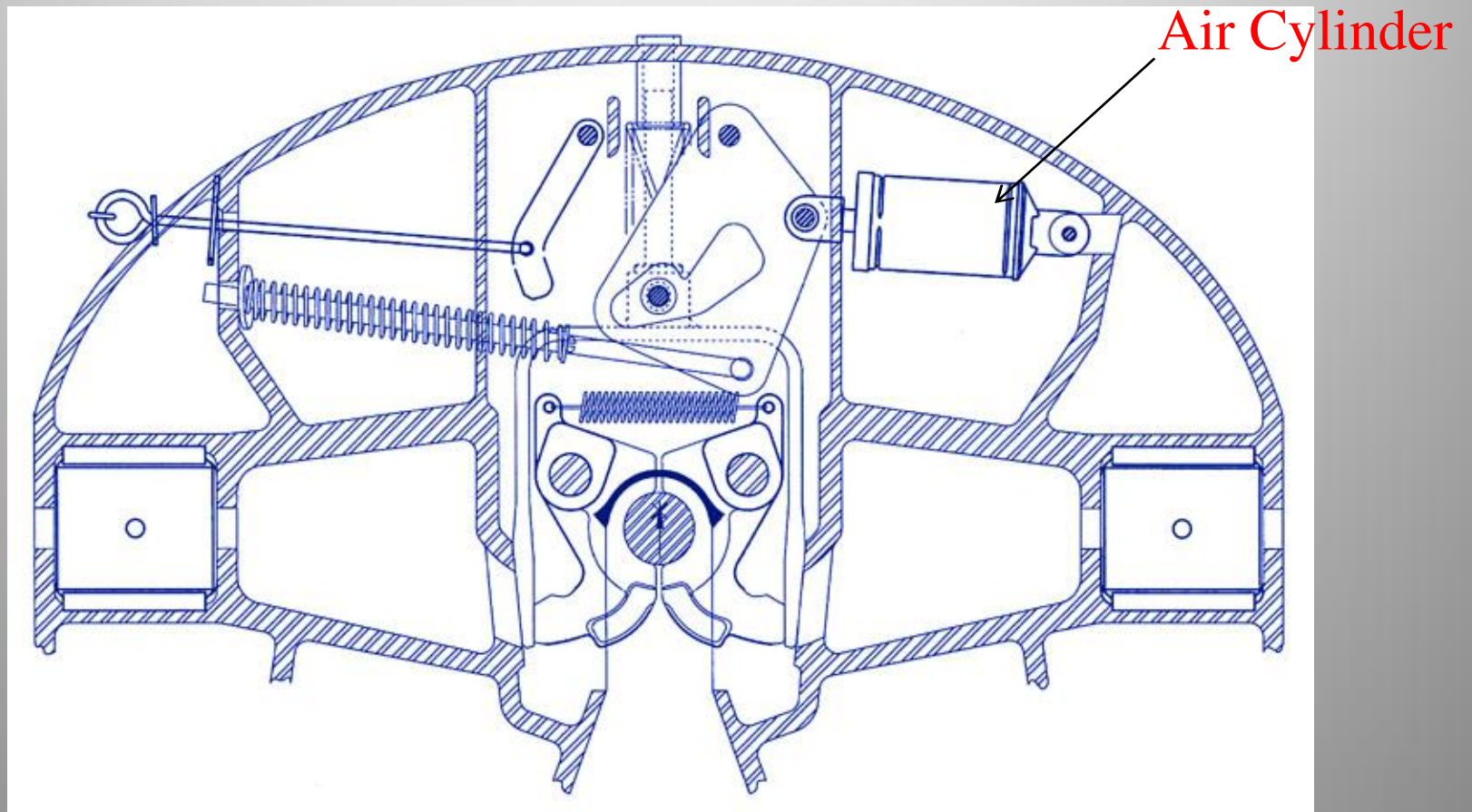


## “B” Style Lock With Air Release



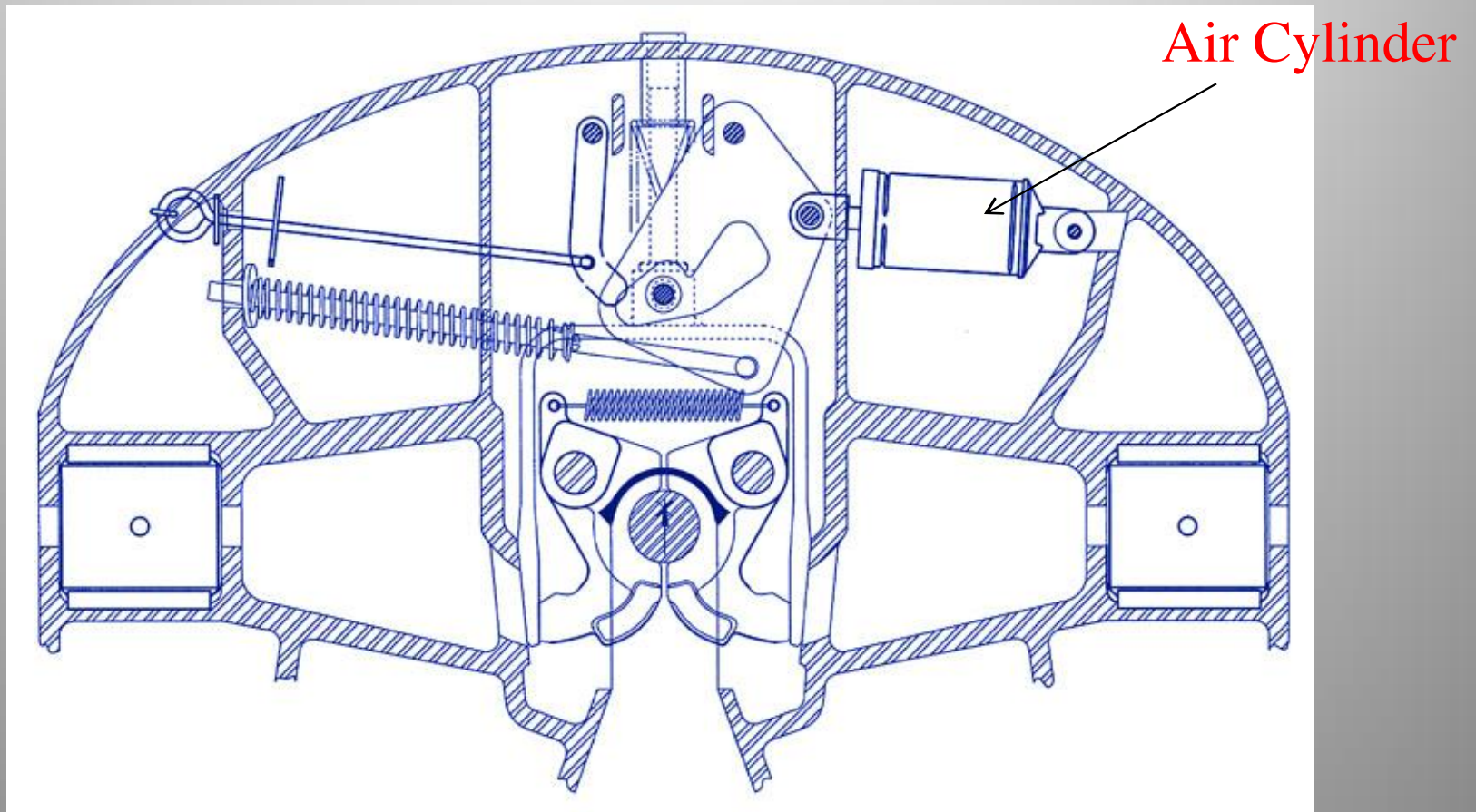
COUPLING SEQUENCE 4

## “B” Style Lock With Air Release



COUPLING SEQUENCE 5

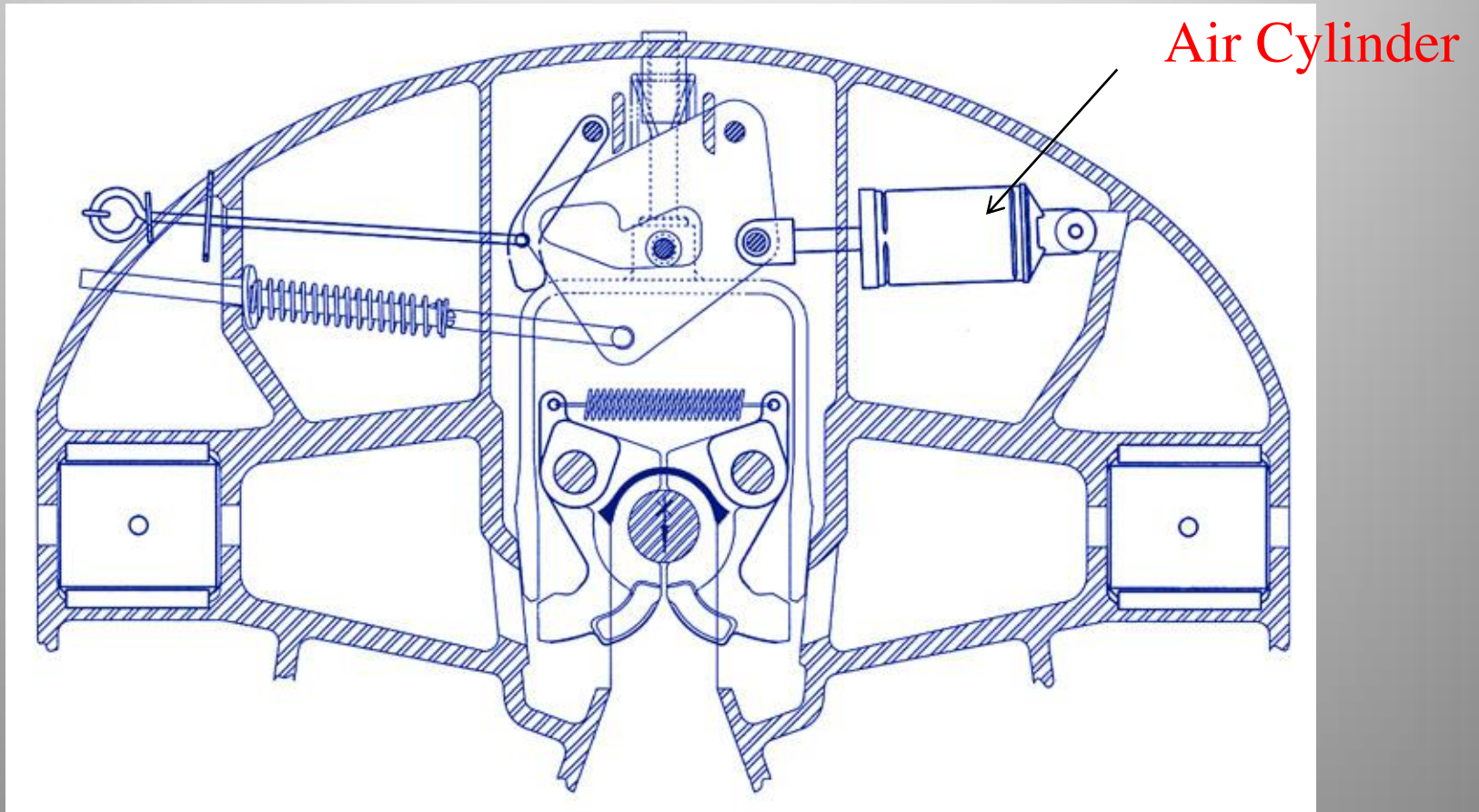
## “B” Style Lock With Air Release



**COUPLING SEQUENCE 6**

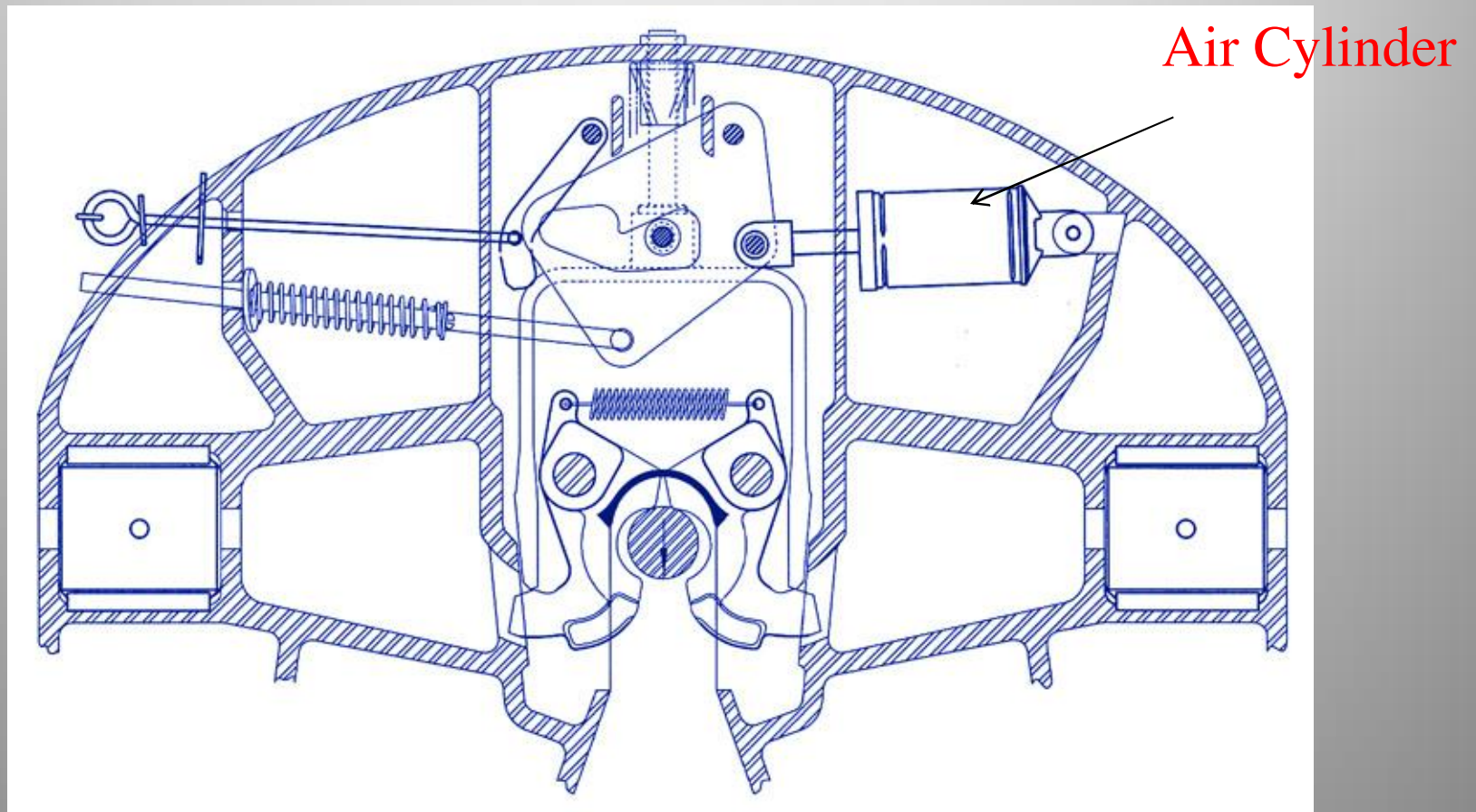


## 8+Style Lock With Air Release



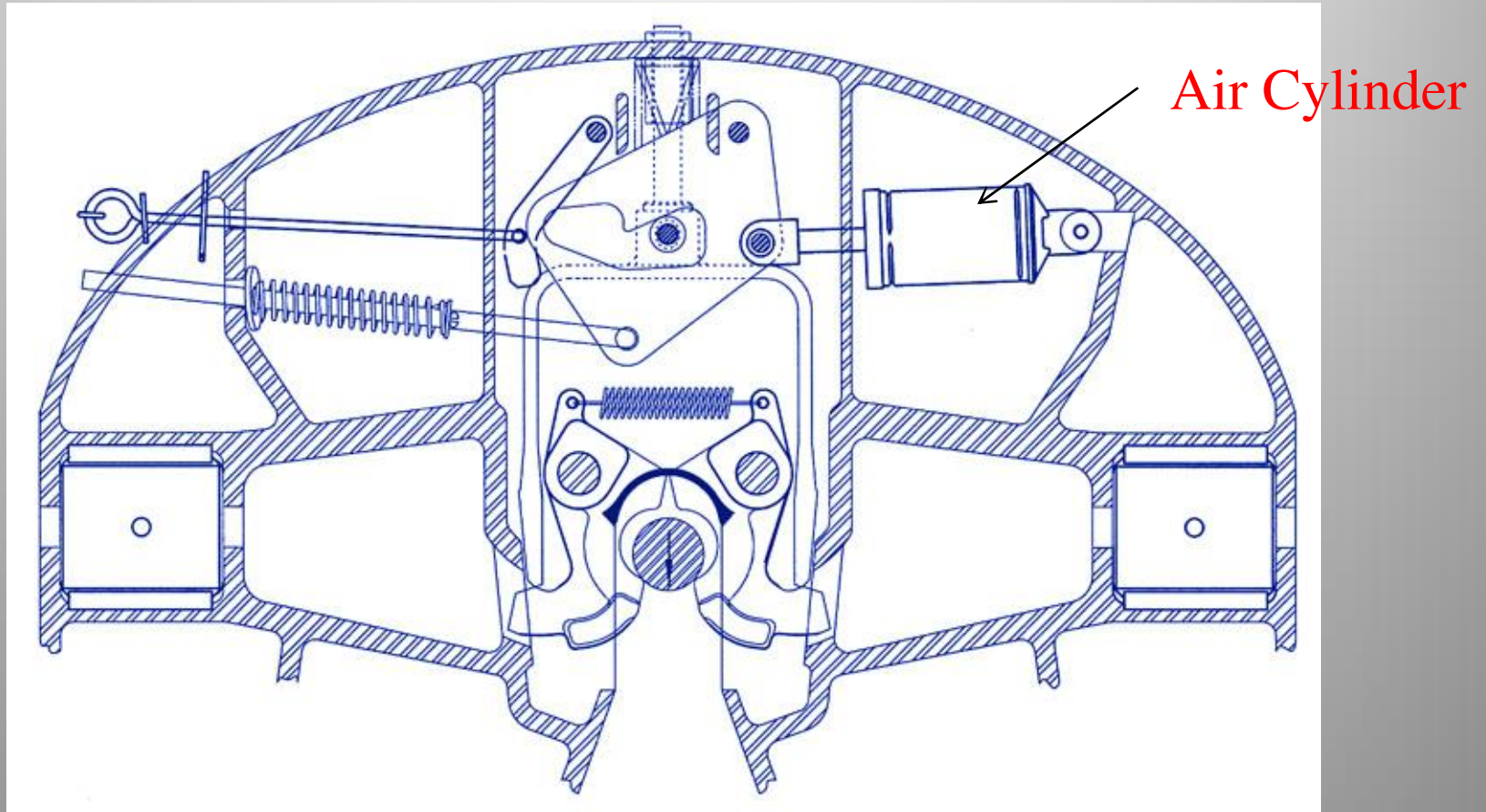
UNCOUPLING SEQUENCE 1

## “B” Style Lock With Air Release



UNCOUPLING SEQUENCE 2

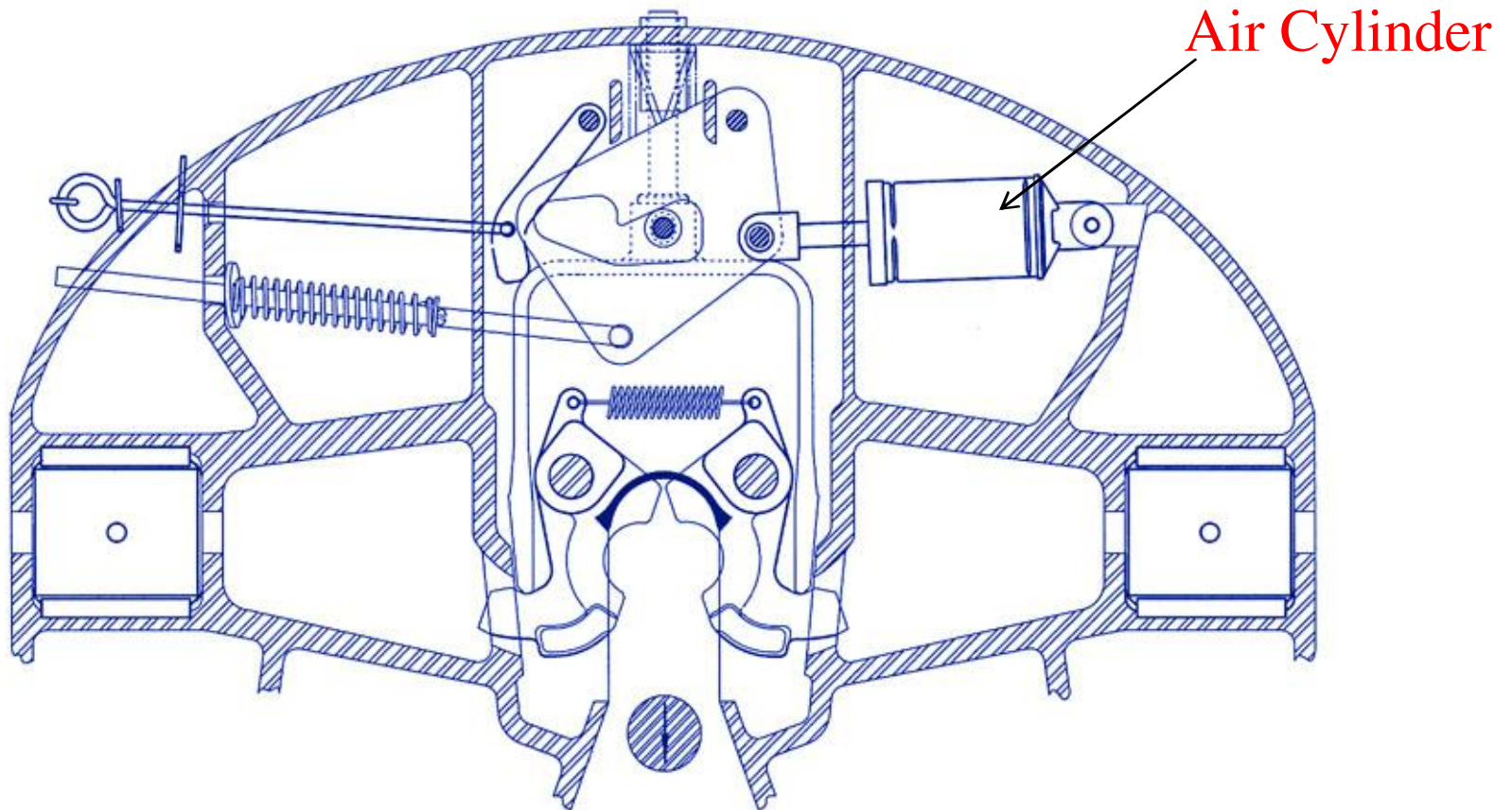
## “B” Style Lock With Air Release



UNCOUPLING SEQUENCE 3



## “B” Style Lock With Air Release

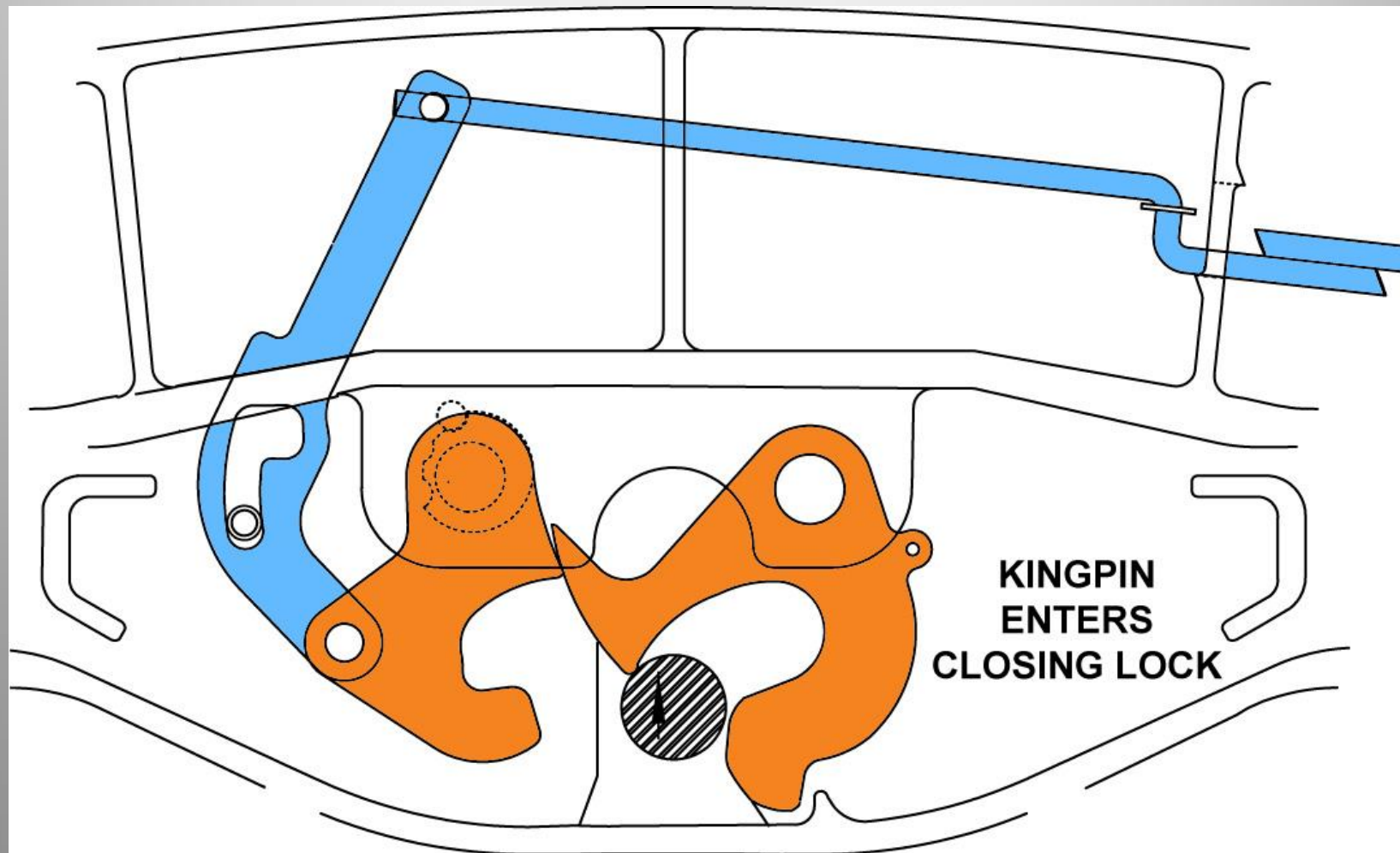


UNCOUPLING SEQUENCE 4

# **Coupling and Uncoupling “A” Style Lock Fifth Wheels**

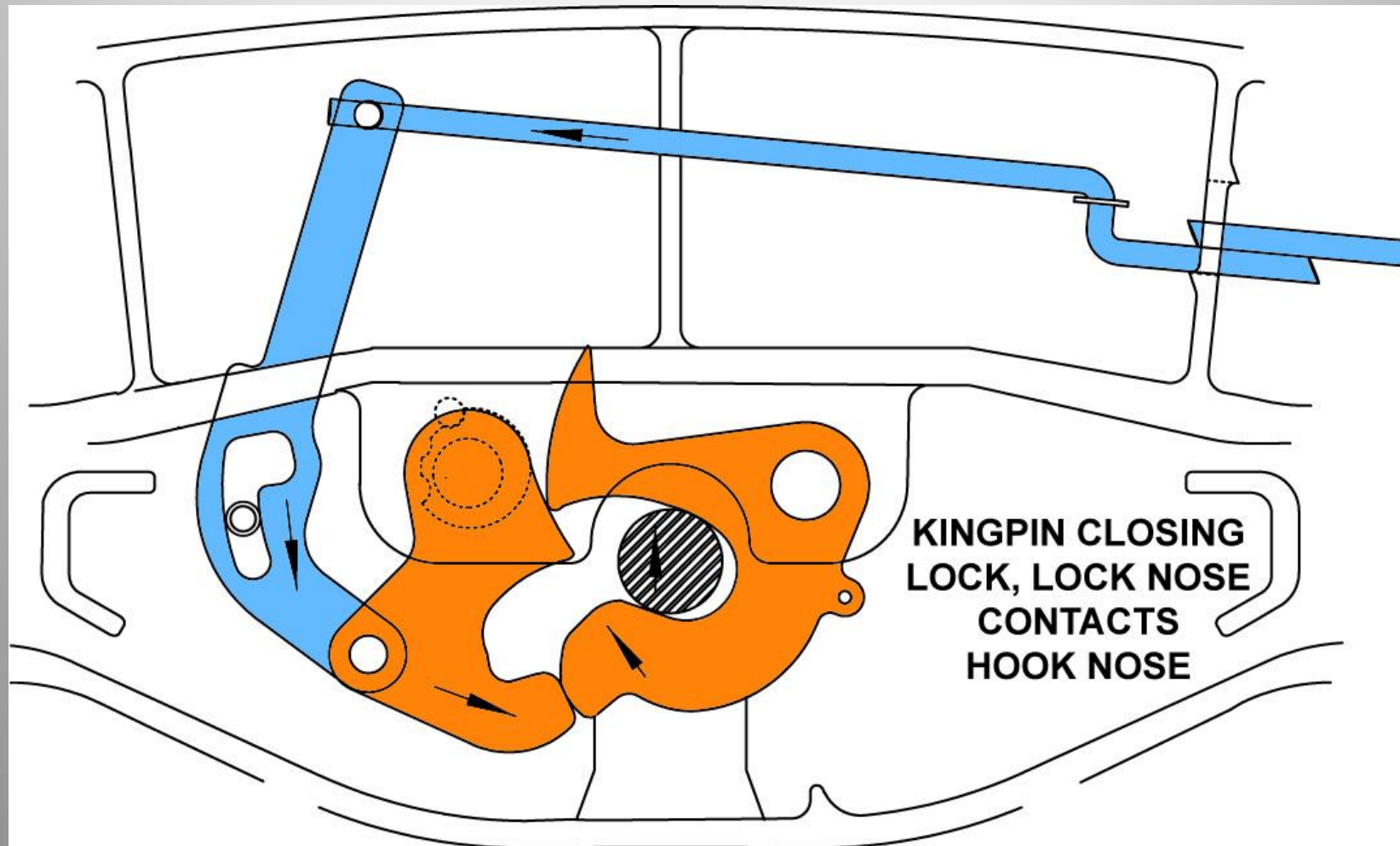


## “A” Style Lock



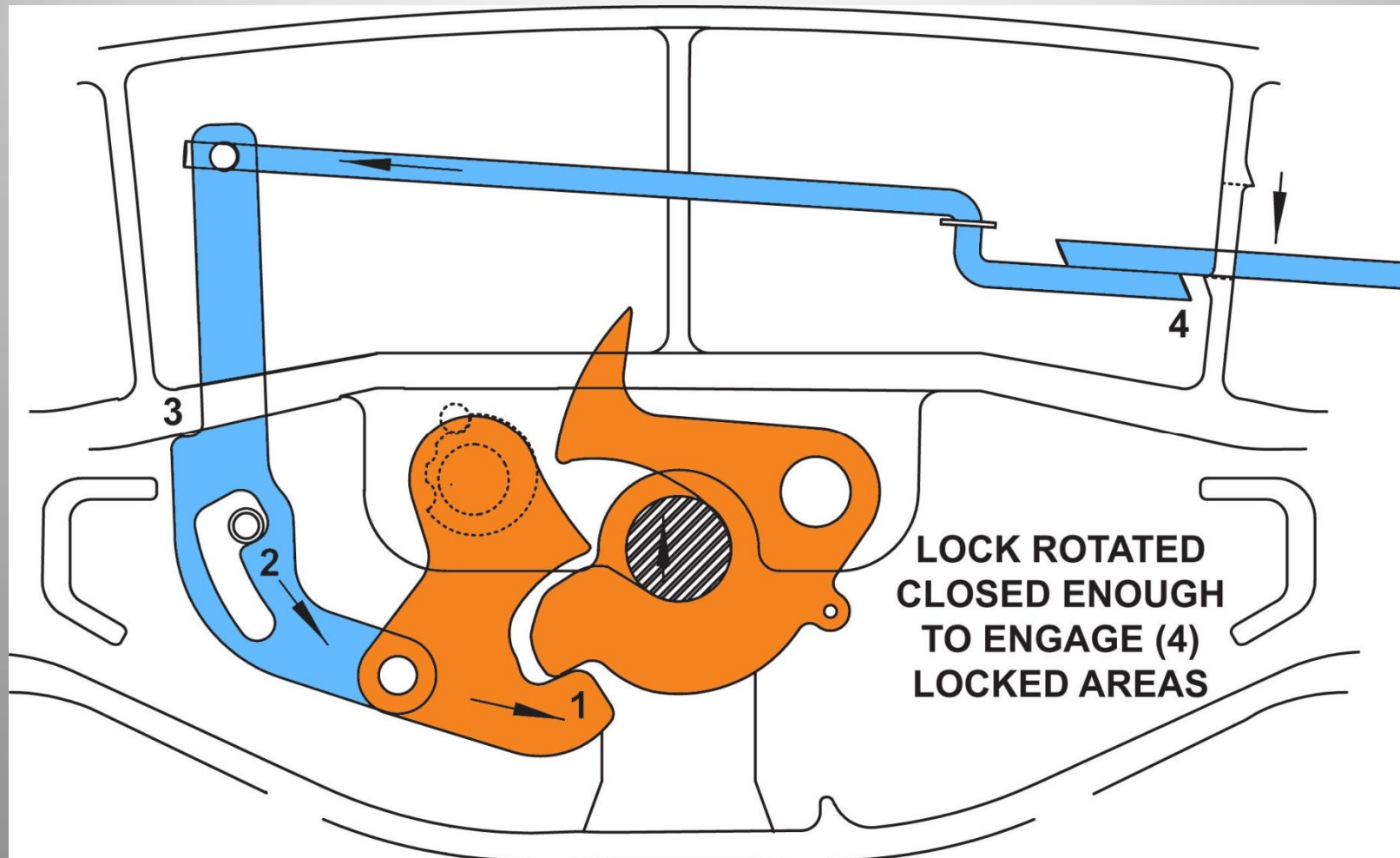
**COUPLING OPERATION 1**

## “A” Style Lock



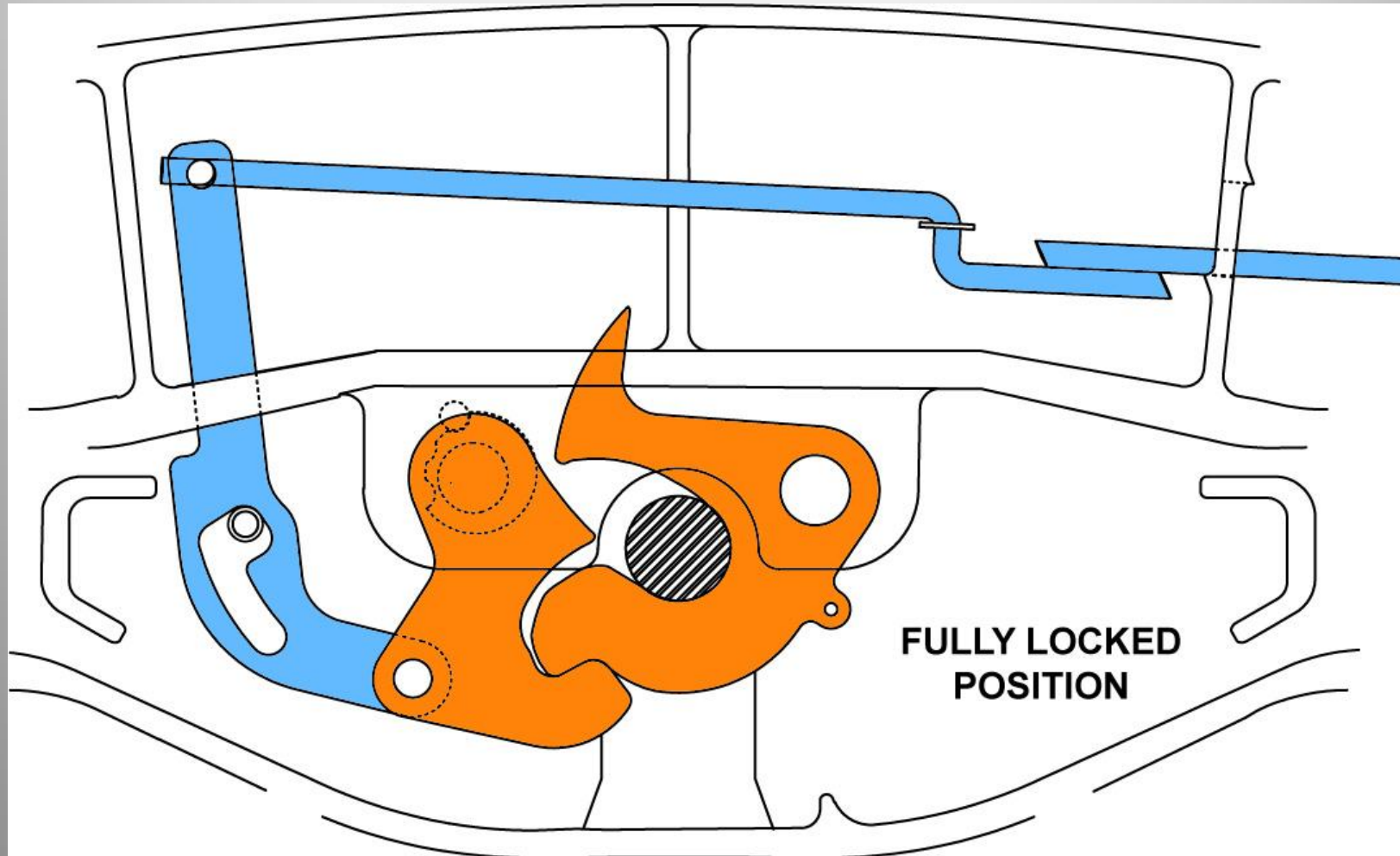
**COUPLING OPERATION 2**

## “A” Style Lock



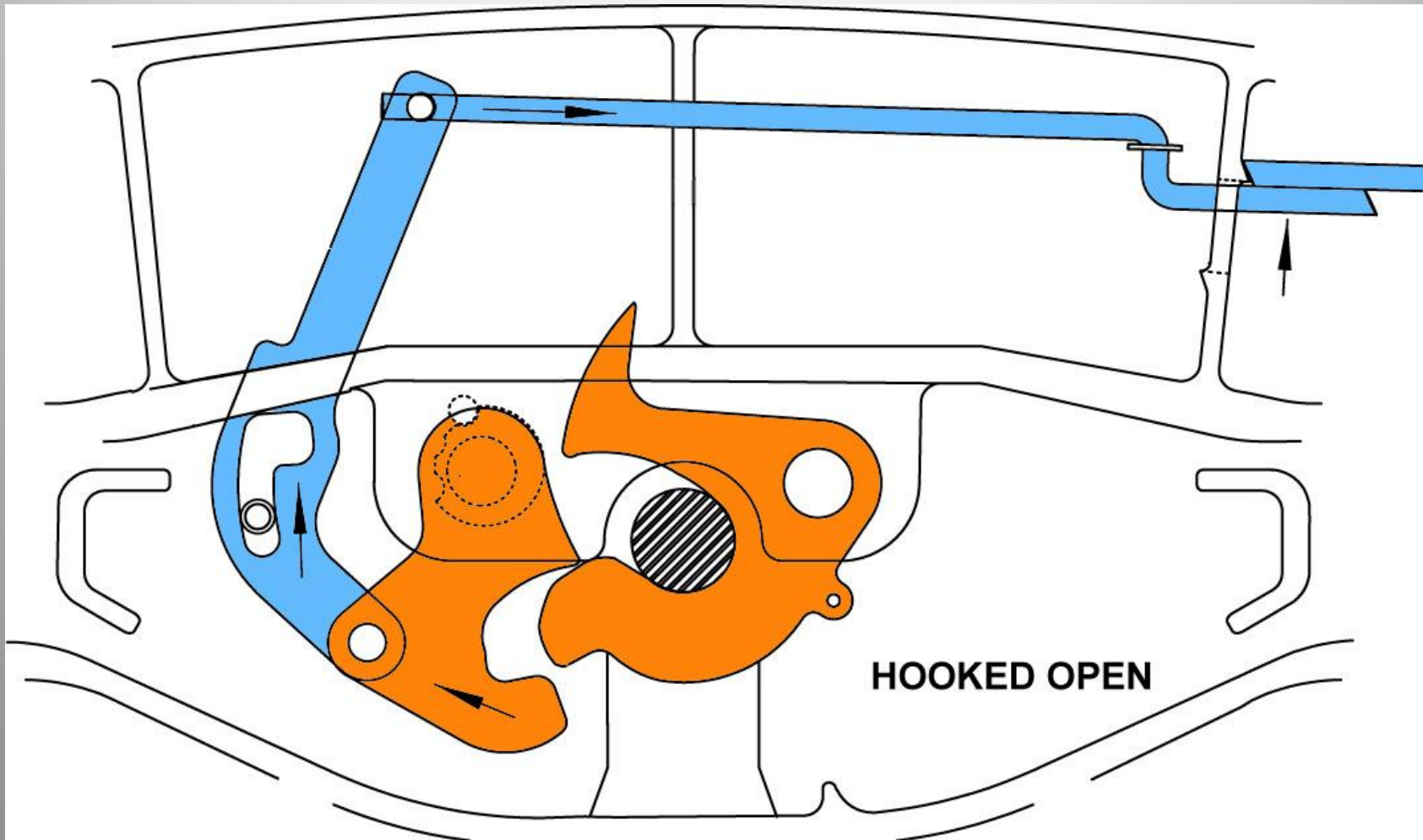
**COUPLING OPERATION 3**

## “A” Style Lock



**COUPLING OPERATION 4**

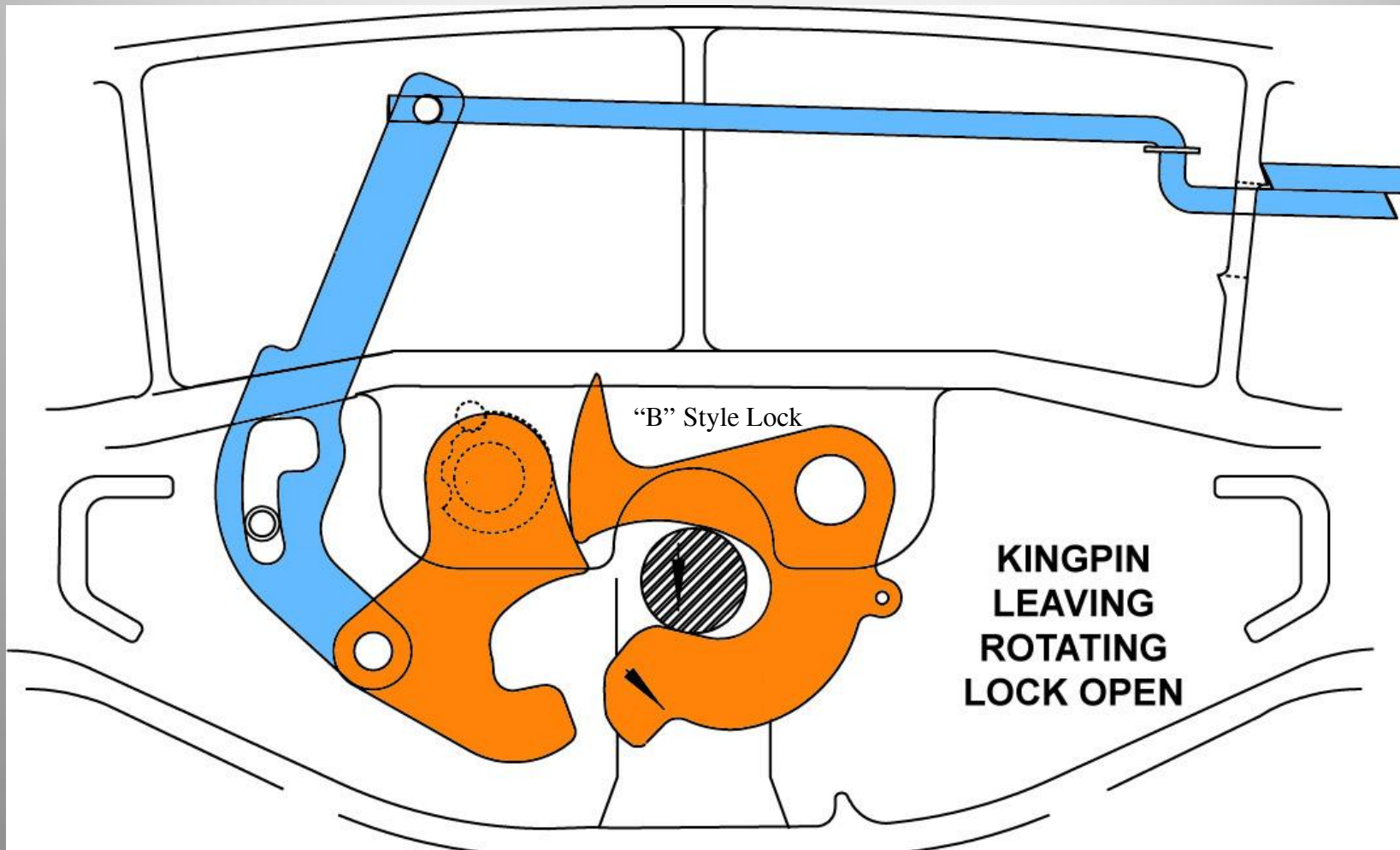
## “A” Style Lock



**UNCOUPLING OPERATION 1**

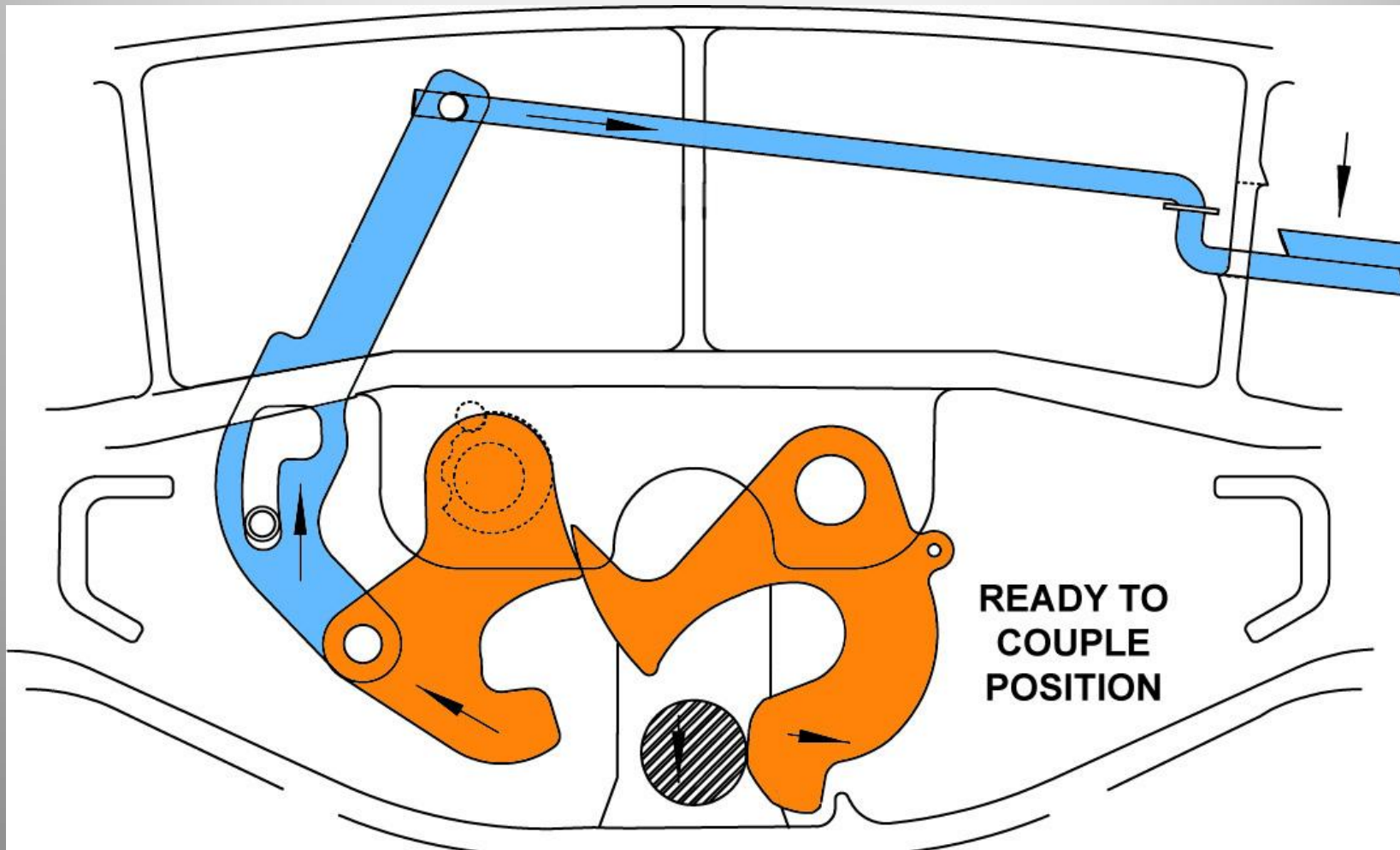


## “B” Style Lock



## COUPLING OPERATION 3

## “A” Style Lock



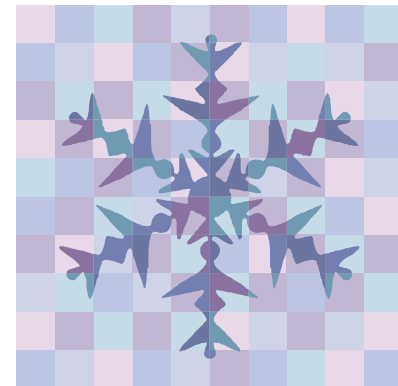
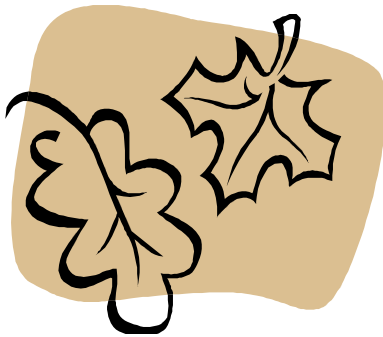
**COUPLING OPERATION 1**

# **Seasonal Preventive Maintenance**



# Seasonal Preventive Maintenance

- ” Failure to properly install, operate, or maintain this fifth wheel could result in tractor and trailer separation causing death or serious injury to others.
- ” **The two most important items in eliminating fifth wheel operating difficulties are:**
  - . 1. Proper fifth wheel preventative maintenance procedures (including as needed lubrication)
  - . 2. Proper coupling procedures



# Seasonal Preventive Maintenance

- ” **1. Proper Fifth Wheel Preventative Maintenance**
- ” ***Routine periodic maintenance and lubrication are a necessary part of your fifth wheel’s service life.***
- ” ***To get the maximum service life, perform the steps below at the intervals shown:***
  - . A. Thoroughly clean the locking mechanism every 6 months or 60,000 miles.
  - . B. Inspect for bent, broken or missing parts every 6 months or 60,000 miles. Replace as necessary (use only genuine parts).
  - . C. Relube, as shown below. Inspect regularly and relubricate as necessary.

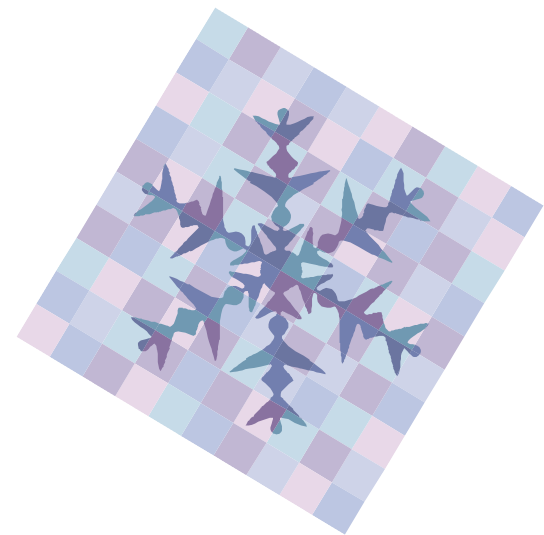
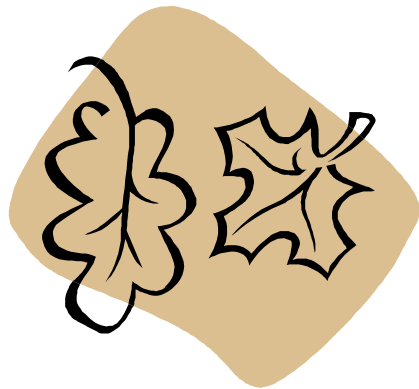


# Seasonal Preventive Maintenance

” D. Check the operation by locking and unlocking using a Holland lock tester. Verify that the fifth wheel is completely closed, as shown on opposite side.

” **GREASE**

- . Release handle and spring
- . Pocket fittings(right and left sides)
- . Locks
- . Yoke tips



# Seasonal Preventive Maintenance

” **Recommendation:**

” **A “low temp” grade grease for -30°F or lower, such as:**

- . *Cato Oil & Grease #5213*
- . *Craftsman Chemical Co. #LTF 2*
- . *Mystic LP-200or equivalent*

Thank You